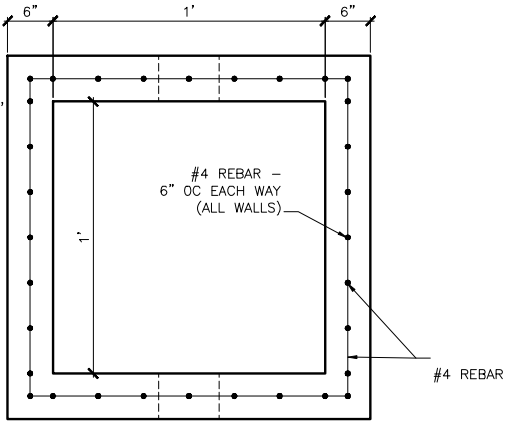
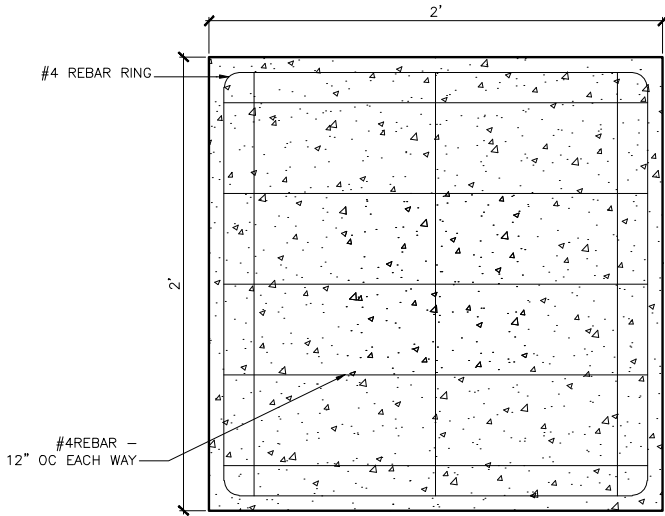


SIDE VIEW

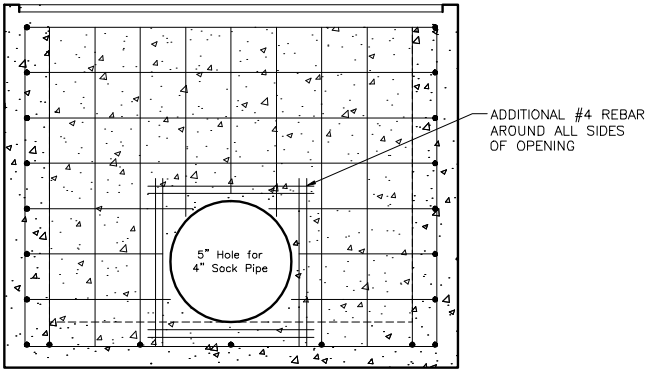
1-1/2" X 1-1/2" X 1/4"
Steel Angle Frame
Cast
In & Cold Galvanized
Painted



PLAN VIEW



BOTTOM SLAB
REINFORCEMENT



DETAIL OF HOLE
REINFORCEMENT

- General Notes
1. CONCRETE SHALL BE 5000 PSI MINIMUM
 2. REINFORCING STEEL TO MEET ASTM-706 or ASTM 615 FOR GRADE 60
 3. ALL PRECAST ELEMENTS SHALL MEET ASTM-C913
 4. ALL OPENINGS TO HAVE ADDITIONAL #4 BARS FOR SUPPORT AS SHOWN

MANHOLE CASTINGS
PIPE
STEEL PIPE
GEOTEXTILE FABRICS
EROSION CONTROL

MAD

MID-ATLANTIC DRAINAGE, INC

1124 WHITE OAK LANE
GALLIWAY, NC 29544
(843) 356-4200

CATCH BASINS
CONCRETE
MANHOLE
CAST IRON GRATES &
FRAMES

P. O. BOX 398
NC 29543
(843) 324-0888

**1'x1'x1.5'
SOLIDWALL
CB**

FILE NAME SCB001.DWG	Sheet
DATE 10.05.2009	1
DRAWN BY JSW	