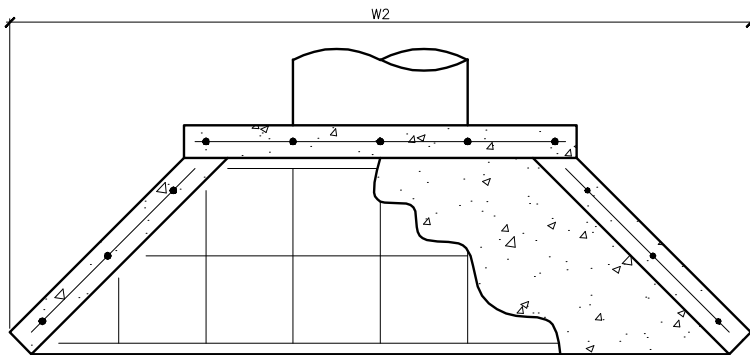
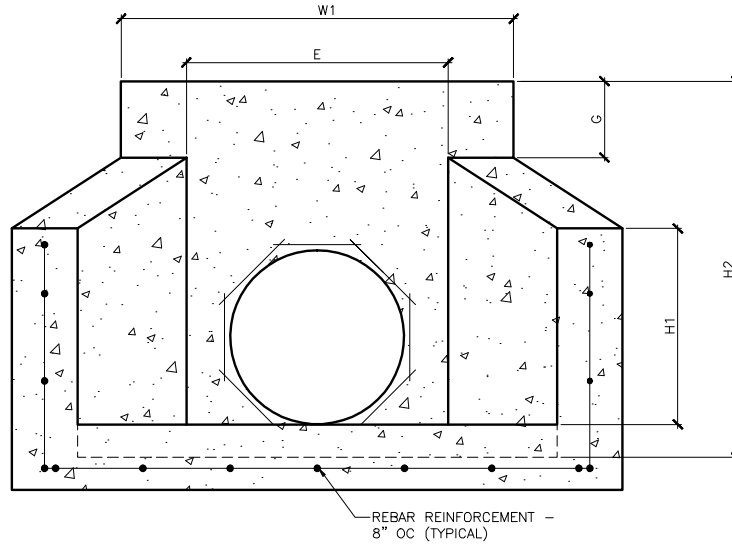


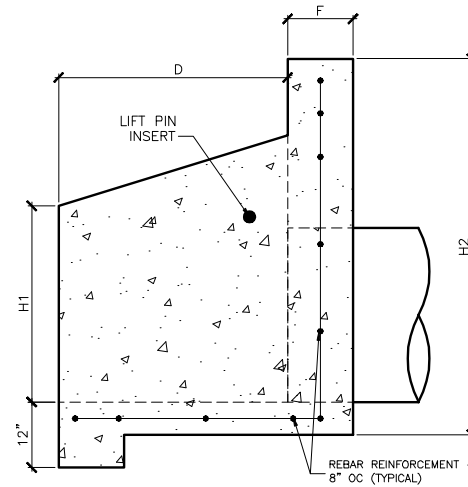
## PRECAST CONCRETE HEADWALLS

INSIDE PIPE DIAMETER	REBAR	WEIGHT	W1	W2	H1	H2	D	E	F	G
12", 15", 18"	#5	2060	44"	73"	23"	42.5"	18.5"	27"	6"	11.5"
21", 24"	#5	3100	50"	93"	31"	57"	24"	33"	6"	13.5"
27", 30", 36"	#5	5940	64"	118"	40.5"	72"	35"	49"	12"	18"
42", 48"	#5	8040	79"	150"	52"	79"	40"	64"	12"	11"
54", 60", 72"	#5	16000	107.25"	189"	60"	101"	46"	90"	12"	12"

**FRONT VIEW**



**PLAN VIEW**



General Notes

1. CONCRETE SHALL BE 4000 PSI MINIMUM
2. REINFORCEMENT STEEL SHALL MEET ASTM-A601 or ASTM-A615 FOR GRADE 60 WITH 2" MINIMUM CLEARANCE
3. PIPE TO BE GROUTED INTO HEADWALL AT JOB SITE BY CONTRACTOR
4. ALL NCDOT APPROVED HEADWALLS SHALL HAVE ALL CORNERS CHAMFERED 1" OR HAVE RADIUS OF 1"

MANHOLE CASTINGS  
 CAST IRON PIPE  
 STEEL PIPE  
 GEOTEXTILE FABRICS  
 EROSION CONTROL



CATCH BASINS  
 CONCRETE  
 HEADWALLS  
 CAST IRON GRATES &  
 FRAMES

**MID-ATLANTIC DRAINAGE, INC**

1124 WHITE OAK LANE  
 CONNETT, VA 22954  
 (843) 356-4200

P. O. BOX 398  
 NC 27643  
 (843) 324-0888

### PRECAST CONCRETE HEADWALL SPECIFICATIONS

FILE NAME HW001.DWG	Sheet
DATE 02.22.2010	1
DRAWN BY JSW	